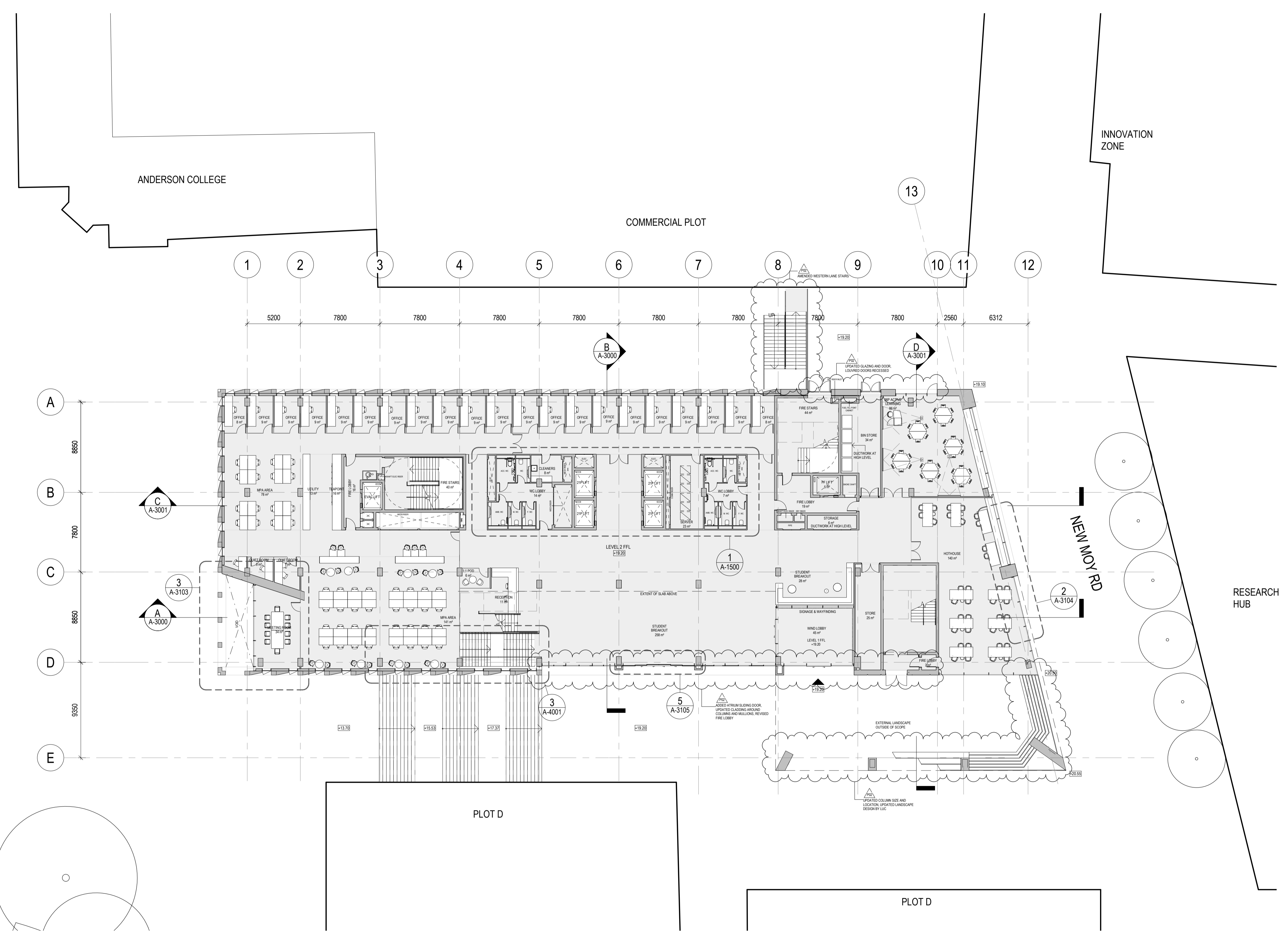
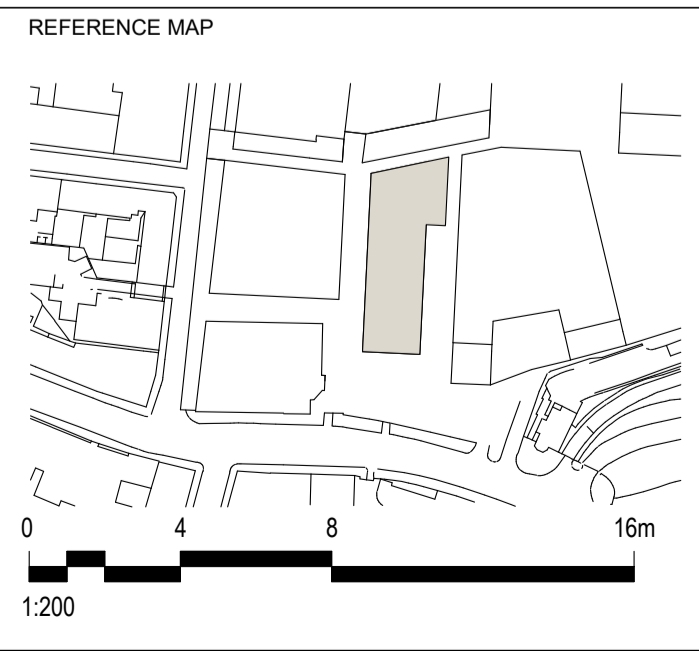


DUMBARTON RD



NOTE: ALL FURNITURE SHOWN IS INDICATIVE ONLY. TO BE SUPPLIED BY OTHERS UNLESS NOTIFIED OTHERWISE. REFER TO JOINERY SCOPING DRAWINGS FOR FIXED ITEMS.



NOTES

- DO NOT SCALE DRAWINGS. WRITTEN DIMENSIONS GOVERN.
- ALL DIMENSIONS ARE IN MILLIMETRES UNLESS NOTED OTHERWISE.
- ALL DIMENSIONS SHALL BE VERIFIED ON SITE BEFORE PROCEEDING WITH THE WORK. HASSELL SHALL BE NOTIFIED IN WRITING OF ANY DISCREPANCIES.
- THIS DRAWING MUST BE READ IN CONJUNCTION WITH ALL RELEVANT CONTRACTS, SPECIFICATIONS AND DRAWINGS.

© COPYRIGHT OF THIS DRAWING IS VESTED IN HASSELL. 2019 HASSELL. LTD.

THIS DRAWING IS AN UNCONTROLLED COPY. UNLESS NOTED OTHERWISE.

DRAWING NORTH

REV	DESCRIPTION	DATE
P02	STAGE 3+ ADDENDUM	18/10/19
P01	STAGE 3+ ISSUE	29/07/19
H	DESIGN UPDATE FOR CO-ORDINATION	11/07/19
G	DESIGN UPDATE FOR COORDINATION	08/07/19
F	DESIGN UPDATE FOR COORDINATION	28/06/19
E	ATRIUM / LAYOUT UPDATED	26/06/19
D	DESIGN UPDATE FOR COORDINATION	24/06/19
C	STAGE 3 DESIGN FREEZE	14/06/2019
B	FOR CO-ORDINATION	31/05/19
A	FOR CO-ORDINATION	13/05/19



CONSULTANT

HASSELL Limited CN 7545819
 1 CURTAIN PLACE
 LONDON EC2A 3AN UNITED KINGDOM
 LONDON@HASSELLSTUDIO.COM
 T +44 20 7450 7669

HASSELL

PROJECT

ADAM SMITH BUSINESS SCHOOL & PGT HUB
 DUMBARTON ROAD, GLASGOW, SCOTLAND, UK

DRAWING TITLE

GENERAL ARRANGEMENT PLAN - LEVEL 02

STATUS

S3 Suitable For Review

SCALE @ A1

1 : 200

DRAWN	REVIEWED	APPROVED
EC	LC	MI

Proj - Orig - Vol - Level - Type - Role - Number - Suitability - Revision

ASB- HSL-BW-02-DR-A-1002-P02

18/10/2019 12:29:06

Original Sheet Size A1 - 841 x 594mm

C:\Revit\Projects\ASB-HSL-XX-XX-10-A-Building_Model_Lchex.rvt